

Affirmation of Support

YES! I want to help strengthen *Israel's only natural resource – its Human Resource, and support the Doctoral Fellowship of Excellence Program.*

- For a gift of \$72 or more you will receive a personalized report on the student you have helped. In addition you will receive a donor certificate, imprinted with your name.
- For a gift of \$180 or more, your name will be entered into a draw to participate in our upcoming Mission to Israel*. You will receive one draw ticket for every gift of \$180. In addition you will receive a donor certificate, imprinted with your name.
- Please do not enter my name in the draw and issue me a full tax receipt.

(Please indicate how you would like your certificate to be personalized)

Mr John Sample or _____

* Due to Canada Customs and Revenue Agency Regulations your tax deductible donation receipt will be in the amount of your gift less the \$10.00 cost of each draw ticket.

Enclosed is my donation of: \$1,800 \$540 \$180 \$72

Thank you for the opportunity to receive the personalized certificate and student report. However, at this time, I prefer to make a donation of: \$36 other \$ _____

- Cheque - payable to Canadian Friends of Bar-Ilan University
- VISA MasterCard

CARD NUMBER

EXPIRY

SIGNATURE _____

Phone: _____ Fax: _____ Email: _____

BIN 10684 6520 RR0001

A tax-deductible receipt will be issued for gifts of \$10.00 and over.

Stay Connected

If you wish to be regularly informed about events locally or on campus, we would be pleased to add your name to our contact list. As well you can receive Bar-Ilan University's weekly Parashat Hashavuah in English by e-mail or fax. Please contact your local Canadian Friends office.

Tribute Cards

To recognize the special events in the lives of your family and friends send customized Bar-Ilan University Tribute Cards or Certificates. Mazel Tov greetings for engagement... marriage... new baby... graduation... special birthday... anniversary... Bar/Bat Mitzvah. Wishes for a speedy recovery and memorials or yartzheit for loved ones.

Personalized cards \$18 • 8 1/2 X 11 Certificate \$100 • Large certificates \$180
Just call your local Canadian Friends office to send a card (VISA and Mastercard accepted).

Canadian Friends of Bar-Ilan University Privacy Statement

Any personal information gathered by Canadian Friends of Bar-Ilan University will only be used by our organization in a manner consistent with Canadian Friends of Bar-Ilan University Privacy Policy and for the purpose of providing you with Canadian Friends of Bar-Ilan University information.

1750 Steeles Avenue West
Suite 214
Concord, ON L4K 2L7
Tel (905) 660-3563
Fax (905) 660-1612

6900 Decarie Boulevard
Suite 3255
Montreal, QC H3X 2T8
Tel. (514) 731-7893

3495 Cambie Street
Suite 124
Vancouver, BC V5Z 4R3

Call us Toll Free 1-888-248-2720

admin@cfbiu.org

or visit us at www.cfbiu.org



focus on Bar-Ilan

Celebrating 50 Years of Excellence

Dear Friends,



As we gear up for Bar-Ilan University's forthcoming Jubilee celebration, which is to be launched next June 2005, we look proudly back to the contribution that Canada has made to make our University what it is today, and look forward to continuing and building our relationship with the wonderfully warm and committed community in Canada. It is truly our friends from around the world that are our loyal source of strength.

In 1955, a handful of committed Jews had a vision, a vision of a university that blended scientific research and Jewish values. Thanks to their dedication, and the support of many, that vision is now the reality of a magnificent 140 acre campus, with 6 Faculties, 38 Academic Departments, 25 Libraries, 130 Laboratories, 33,000 Students, and over 59,000 Alumni around the world.

As we celebrate 50 years of achievement, Bar-Ilan University will continue to work towards the creation of a knowledgeable and productive citizenry which will contribute to Israeli society and all of humankind. With your help we will continue to achieve and to invest in the future.

I look forward to celebrating Bar-Ilan's success with you in this our Jubilee year and I welcome all of you to Israel for the Jubilee celebrations!

Sincerely,

Moshe Kaveh

Prof. Moshe Kaveh
President

50 YEARS AND COUNTING...



Mazel Tov! Bar-Ilan University is celebrating 50 Years in 2005, and the Canadian Friends of Bar-Ilan University are joining the party. As part of the celebrations, Canadian Friends of Bar-Ilan University are participating in a mission to Israel that will take place from June 6-11, 2005. The mission is promising to be one of the most electrifying trips to Israel yet, with the best Bar-Ilan researchers as our guides, a Gala celebration of Bar-Ilan's 50 years of achievements, tours of the Golan and the Sinai, study with Israel's best scholars, Shabbat in Jerusalem, exclusive meetings and briefings with Israel's top leaders. The trip will be a chance to celebrate Canada's contributions to Bar-Ilan and Bar-Ilan's contributions to the Jewish people. While the fun and joy of this trip is not limited, spaces on this mission are, so if you'd like to join us in celebrating this milestone, contact us at admin@cfbiu.org or at 1-888-248-2720.

Message from the President



The year 2005 marks the 50th anniversary of Bar-Ilan University, and we here in Canada have great cause to celebrate this milestone. Canadians played a major role in the founding of Bar-Ilan and can take great pride in our contributions.

We here in Canada can be proud of our numerous contributions. The Begin-Sadat (BESA) Center for Strategic Studies, The Gewurz Center for Gender Studies, The Martin (Susz) Land of Israel Studies

Department, The Arnold and Leona Finkler Hall for Human Rights, The Norman and Johanne Sternthal Torat Eretz Yisrael Program and the Gabi and Louis Weisfeld Fellowships for Combat Veterans are just a few of the many contributions that Canada has made to make Bar-Ilan the institution it is today.

You too can share this commitment to academic excellence and unite with Israel's brightest and talented minds by joining me in supporting Bar-Ilan University.

2005 will be a year of celebration for The Canadian Friends of Bar-Ilan University, and I look forward to sharing our simcha with all of you.

Mira Koschitzky
National President
Canadian Friends of Bar-Ilan University

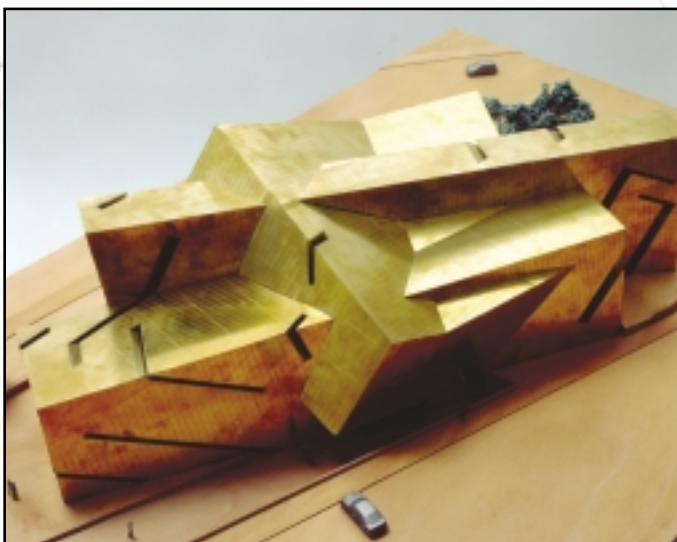


In April of 2004 Efraim Inbar was the keynote speaker at the Arnold and Leona Finkler Memorial Lecture at Beth Tikvah Synagogue in Toronto. Pictured here are Patty and Alan Friedland, Efraim Inbar, Dov Altman – National Executive Director CFBIU and Marla and Ilan Sakaznajder

Toronto and Montreal come together at the board of trustees meeting in Israel

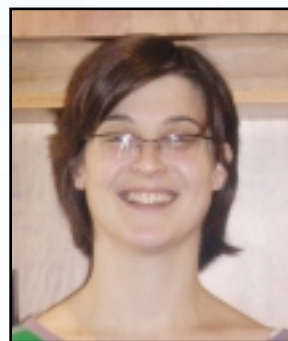


Libeskind Designs Bar-Ilan University Building



Famous Jewish architect Daniel Libeskind is not only designing the new addition to Toronto's Royal Ontario Museum, and the new World Trade Centers in New York City, but his most recent project can be found at Bar-Ilan. Libeskind is the face behind the new façade of the Maurice Wohl Convention Center at Bar-Ilan University, another exciting addition to the ever-expanding BIU campus! The building, which will open in March of 2005, will blend two of Bar-Ilan University's key components, the secular and the sacred in a beautifully crafted building that will house conferences and performances on the campus. Although this is Libeskind's first design in Israel, his buildings house many other Jewish institutions such as the Jewish museums in San Francisco, and Berlin. To get a closer look at the new building at Bar-Ilan, visit <http://www.biu.ac.il/> and click on the virtual campus tour, or consider joining Canadian Friends of Bar-Ilan University's 50th Jubilee Mission to Israel taking place on June 6-11, 2005.

MEET A FEW OF OUR Doctoral Fellowship of Excellence Students



Michal Rom – Sponsored by Norman and Johanne Sternthal *Studies in Gender Issues*

My choice for Bar-Ilan was a very simple one, in that there is no other university in Israel which offers Graduate degrees

(Master and Ph.D.) in Gender Studies. Since I wanted to major in this particular field, Bar-Ilan was the ideal location. The second reason for choosing Bar-Ilan, was the Doctoral Fellowship of Excellence Program, which for me was a crucial factor in deciding to enrol. In the reality of Israel today, as it shows in the macro level and on the micro level of my personal life as a mother, wife and Ph.D. student, I have no doubt I could not have done it without this scholarship.

My research will concern itself primarily with the factors and processes affecting Israeli women's decision whether to change or to keep their family maiden name after marriage. My research, which has never been researched in Israel thus far, will show how the decision whether to change or to keep your maiden name is influenced by - and helps to shape - social institutions.



Yair Eldon – Sponsored by Joseph Shier *Conflict Management Studies*

I decided to study at Bar-Ilan as it was the only university that enabled me

to combine my love of rabbinic literature and my deep interest in social and political issues. The conflict management program gives me an opportunity to study in depth the general aspects of conflict and conflict management while taking an interest in Israel's special situation and the unique world view of Judaism on the various topics that conflict arise.

I hope that I will contribute a few insights to the conflict management world and about the rabbinic world, without being apologetic.

My work will be about concepts and procedures of excommunication and shunning in rabbinic literature in the light of conflict-management - critical and comparative study.

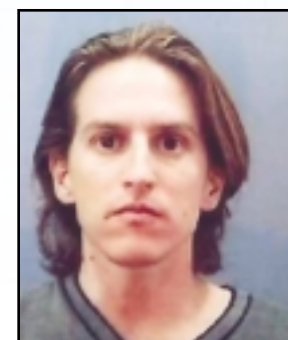


Yakov Fuchs – Sponsored by Norman and Johanne Sternthal *Talmudic Studies*

The reason I chose BIU was because BIU has the biggest Talmud department in Israel, and hosts some of the most

important scholars in the field. BIU represents the ideal of bringing Torah into modern life, by combining Torah values and academic excellency. The vision of the Doctoral Fellowship of Excellence Program, and the generosity of my donor made my project possible.

In my research I use secondary sources that preserved Rashi's commentary, and try to reconstruct Rashi's work in order to validate Rashi's commentary to tractate Moed Katan.



Oz Malkesman – Sponsored by Patty & Allan Friedland *Studies in Brain Research*

I am studying at Bar-Ilan University for 7 years

now, and I find it a very unique and interesting university. Bar-Ilan is the only university in Israel which combines Judaism and science in a synergic way, that helps you to understand that those two subjects can and should work together side by side.

I am working on developing prototypes for new drug therapies that will aid in the fight against childhood depression.

Program in Conflict Management and Negotiation

The Interdisciplinary Program in Conflict Management and Negotiation at Bar-Ilan University focuses on graduate education (MA and Ph.D.) and advanced research. Faculty and students examine and test the utility of models and techniques in negotiation, diplomacy and conflict management in a wide range of issues of central importance to Israeli society and internationally.

Our Activities:

Over 100 students are currently studying in the MA and Ph.D. programs, and each year between 30 and 40 new students are admitted from over 150 applicants. Our students reflect the various sectors of Israeli society – officers from the Israeli Defence Forces; officials from government ministries involved in negotiations; lawyers; and professionals involved in other forms of conflict resolution and mediation, such as educators, social workers, etc.

Students in the program have taken part in mediation training in conjunction with the Bar-Ilan Campus Mediation Center through supervised observation followed by academic analysis of the process and its outcomes.

The Milton Shier Doctoral Fellowship is granted for Doctoral research on conflict resolution in issues of central importance to Israel and the Jewish people. The recipient receives a 4-year stipend under the terms of the Bar-Ilan Presidential Doctoral Fellowship awards and, in addition to fulfilling program requirements including thesis research, contributes to other activities of the program in his/her field of expertise, including seminars, conferences, and public education.

Ongoing research projects include "Lessons from the Oslo Process," "Jewish Approaches to Conflict Resolution," and "Tolerance and Pluralism in an Immigrant Society: The Israeli Experience." Further activities include international conferences, guest lectures, workshops, and advanced seminars on these research areas, and publication of the proceedings.



Prof. Gerald Steinberg, director of the program on Conflict Management and Negotiation at Bar-Ilan University addresses Winnipeg Jewish community in conjunction with The Asper Foundation Lecture Series and the Winnipeg Zionist Initiative. Pictured here are Gail Asper, Babs Asper and Prof. Gerald Steinberg

Doctoral Fellowship of Excellence Program

The beginning of wisdom is to acquire wisdom: Therefore use all of your means to attain understanding. Proverb 4:7

Bar-Ilan University's founding pillar of achieving the full academic potential of its students is embodied in its **Doctoral Fellowship of Excellence Program**. Chosen from a diverse body of applicants who apply from leading universities in Israel and from around the world and represent diverse cultures and religious backgrounds, students are paired with donors to achieve academic excellence and aid in sharing our cherished human values, which are at the heart of our heritage. The program is an exciting opportunity that enables patrons to adopt talented doctoral students and to be a part of their progress and achievements in their areas of research. Launched five years ago, 550 students out of 1,250 Ph.D. students have benefited from the **Doctoral Fellowship of Excellence Program**, and the program continues to be an important part of Bar-Ilan University and its dedication to teaching the Jewish leaders of tomorrow.

When you become a sponsor of Bar-Ilan University's **Doctoral Fellowship of Excellence Program**, you enable young scholars like Michal, Yakov, Yair, and Oz and many others to reach their full academic potential. Become a partner in the future contributions that individuals make to Israel and the Jewish people at large.

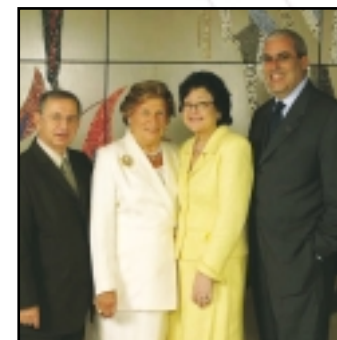
Bar-Ilan University Pays Tribute to GABI WEISFELD



Gabi Weisfeld and Sam & Lori Merson



Gabi Weisfeld and Roel & Dorothy Buck



Prof. Moshe Kaveh, Gabi Weisfeld, Mira Koschitzky, Dov Altman - National Executive Director CFBIU.

June 6th, 2004 marked a very special day for Gabi Weisfeld and the Canadian Friends of Bar-Ilan University. Close to 200 people gathered at the Beth Tzedec Synagogue in Toronto to pay tribute to Gabi and her many contributions to BIU. The Canadian Friends of Bar-Ilan University hosted the brunch that included an address by Prof. Kaveh, a video presentation highlighting the accomplishments of both Gabi and her late husband Louis z"l lifelong commitments to Israel and the Jewish people. Those in attendance also included a student from BIU who thanked Gabi for her generous support and sponsorship through the Gabi & Louis Weisfeld Fellowship for Combat Veterans. In May, Bar-Ilan University honoured Gabi with a Doctorate of Philosophy Honoris Causa for her many contributions to Bar-Ilan University.



Prof. Moshe Kaveh and Nathan Disenhouse



Saul Koschitzky and Mrs. Golda Koschitzky



Pictured here is Gabi Weisfeld receiving honorary doctorate from BIU president Moshe Kaveh and Mira Koschitzky.

MOSHE KAVEH VISITS MONTREAL



Sam and Brenda Gewurz, Prof. Moshe Kaveh, Johanne and Norman Sternthal.



Norman Sternthal, Alvin Segal, and Prof. Moshe Kaveh

Canadian Friends of Bar-Ilan University were honoured to host Prof. Moshe Kaveh, President of Bar-Ilan University in Montreal last June. Prof. Kaveh visited Montreal to update leaders on the remarkable and exciting progress that is being made at the University and to brief the community on the events planned for this, Bar-Ilan University's 50th Jubilee year.

BESA EVENT IN TORONTO



Bernie and Elise Gropper hosted BESA event in Toronto. Seen here are Bernie and Elise Gropper, Reva Heft, Thomas Hecht and Efraim Inbar, director of the BESA Center.

The Begin-Sadat (BESA) Center for Strategic Studies, one of Israel's most dynamic research institutions, is dedicated to the study of Middle East peace and security, in particular the national security and foreign policy of Israel.

The BESA Center is a non-partisan and independent institute, affiliated with the Political Studies department at Bar-Ilan University, Israel. The Center was founded in 1991 by Thomas O. Hecht, and is named in memory of Menachem Begin and Anwar Sadat.

BESA provides policy-oriented research on matters of strategy, security and peace in the Middle East and also sponsors conferences, workshops, lectures, and briefings for international and local audiences, bringing together leading experts from the field and the academia, from Israel and abroad. BESA has developed cooperative relations with leading strategic research institutes throughout the world, from Ankara to Washington and from London to Seoul.

BESA's research team consists of some of Israel's best and brightest academic and military minds, widely acknowledged experts, in Israel and abroad. BESA is associated with some of the leading experts in international affairs, who comprise its academic advisory board.

The Machon and Midrasha: Promoting Torat Eretz Yisrael

The Ludwig and Erica Jesselson Institute for Advanced Torah Studies (the Machon) and the Midrasha for Women serve as the flagship of Bar-Ilan University's "Torat Eretz Yisrael" ideal. By affording Bar-Ilan University students with the unique opportunity of combining intense Torah scholarship with their academic and professional training in a wide range of fields, these outstanding Israeli institutions are producing a **new prototype of Torah scholar**. Established in 1982, in response to the increasing demand for advanced Torah study opportunities for committed Jewish women, the Midrasha has grown to become Israel's foremost women's Torah institute. Programs promote independent Torah research, community involvement and halachic expertise in issues concerning women and family.

The Canadian Friends of Bar-Ilan University is proud to announce the creation of The **Norman and Johanne Sternthal "Torat Eretz Yisrael" Program** which will undertake to ensure the continuity and further enrichment of the Machon and Midrasha by supporting their various programs and needs, including scholarships, teaching curriculum development and enrichment activities.



A Vision for Israel's Future Bar-Ilan University – Educating Towards Jewish Heritage and Scientific Excellence

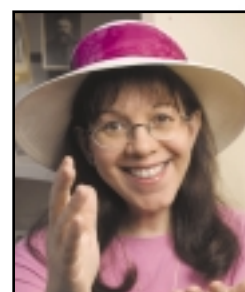


Brain Research



Prof. Moshe Abeles, director of the Gonda (Goldschmied) Brain Research Center, is receiving international acclaim for his revolutionary theory of how brain cells communicate. Prof. Abeles, found experimental evidence of organized and meaningful constellations of brain impulses. He joined Bar-Ilan University to coordinate the research of 25 professors and more than 100 doctoral students at Bar-Ilan University's Susan and Leslie Gonda (Goldschmied) Brain Research Center, a magnificent, new 70,000 sq. ft. facility with 36 well-equipped neurobiology, psychology, computer science and physics labs.

Contemporary Jewish Studies



Prof. Judy Baumel studies the heroes of modern Jewish and Israeli history - seeking to understand the Jewish People's memory, myths and cultural baggage. Prof. Baumel studies the heroes of modern Jewish and Israeli history. Prof. Baumel directs the university's new interdisciplinary Ph.D. program in Contemporary Jewry. The unique program seeks to provide advanced students – mostly career educators and community activists with leadership aspirations – with a broad knowledge of Jewish history, political thought, education, sociology, philosophy, art and communications.

Nanotechnology



Prof. Chaim Sukenik, director of the Bar-Ilan U. Center for Advanced Materials and Nanotechnology (BICAMN), is a leader in the search for "nano" solutions to the challenges of modern science. His BICAMN colleagues along with 17 senior faculty members with over 150 Ph.D. scientists and graduate students – have published more than 400 nanoscience papers over the past five years, including breakthroughs in energy storage and conversion, superconductivity, water purification, drug delivery, medical imaging, military technology and more.

International Law



Prof. Yaffa Zilbershats, one of Israel's most prominent scholars of constitutional, international and human rights law, fights Israel's battles in the global arena. Prof. Zilbershats, deals with the most controversial legal-political issues of the day. She is on the frontlines of Israel's debate with the world community. Prof. Zilbershats, dean of the Bar-Ilan U. Faculty of Law and a prominent commentator for the Israeli and global media, also serves as the first deputy president of the International Association of Jewish Lawyers and Jurists, and as an expert member of several parliamentary committees.